



Christ Presbyterian Church in The Hill

Chip M. Anderson, *Pastor*

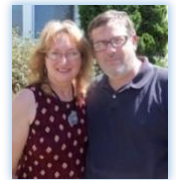
(203) 450-2299

Maxine Harris, *Administrative Assistant*

(203) 668-1227

158 Davenport Avenue, New Haven, CT 06519 – Worship site and office address

135 Whitney Avenue, New Haven, CT 06510 – Mailing Address



NEWS FROM CPC IN THE HILL — WINTER 2019

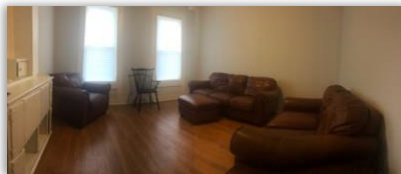


ANNUAL NEW YEAR'S EVE WATCH SERVICE—Our 2018 New Year's Eve Watch Service was well attended. This service has become a good, annual tradition for us—and we are at capacity on the stage (i.e., the platform). One more person and we'd have to start sitting people on the floor. If the pattern keeps up, we will begin to see the floor around the stage begin to fill next year. We meet and begin at 10:30pm.

After our trademark sticky-note confessions (see the cross to the left where we stick our confessions in red), we eat together in the adjacent room. Then, we re-gather in the sanctuary and read a Word (this year, John 14:1-6) and discuss it together—



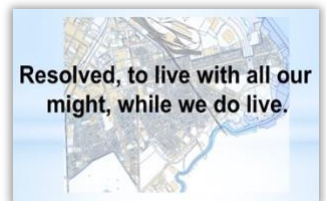
freestyle and open. After listening to the King's word, we lifted up our sticky-note prayer requests to God (i.e., stick them—the blue ones—to the cross). Just before midnight and the start of the New Year, we approach the King's table, break bread to affirm we are one-in-Christ and lift a cup to celebrate our ascended King who sits at the right hand of the Father. *We envision this NYE Watch Service will be a significant event each year for the Hill—your support helps ensure this will happen.*



OUR NEW SPACE IN THE HILL—We now live in the Hill, less than a block from the park we BBQ in during the summer. We have already met neighbors that know us from the park. “Hey, Park Pastor.” “Pastor Chip.” “Reverend.” “Hey, preacher, you live here?” Folks here are somewhat surprised Lisa and I moved into the Hill. Many (maybe most) pastors of churches like ours in neighborhoods like ours don't live in the neighborhood where their churches are located. We are no heroes nor more spiritual

than others, but we do believe the Hill is our parish and as such we should be living among the good people of the Hill, who have so welcomed and adopted us. Soon, we'll be holding Bible Study, maybe even church, and, for sure, meals in the living room on the left. *Your support and prayers make this possible. Thank you.*

VISION-PRAYING: COMMUNITY-CENTERED PRAYER REQUESTS—A few Sunday's ago, after preaching through Jesus' words to *Seek first God's kingdom* (Mt 6:33), I concluded with a rephrasing and local application of Jonathan Edwards' sixth resolve: *Resolved, to live with all my might, while I do live.* We, as CPC in The Hill, are called to live out the Sermon on the Mount, seeking God's kingdom, and so, are to *resolve to live with all our might while we do live.* *Your support and prayers help us to fulfill this calling, this resolve.*



Please pray for our vision and pray how you may partner with us to see what God can do on this adventure in the Hill:

- Pray some will join us as a part of our CPC in The Hill congregation that have entrepreneur skills to make opportunities in the Hill.
- Pray some with a humble and learning spirit will join us as a part of CPC in The Hill, not for leadership, but as servants to empower our Hill members and, thus, our Hill neighbors, who can help us build the resources we need, that the Hill needs.
- Pray some young, trained, Christian adventurers will come join us—and stay, not just as a mission adventure, but a committed, long term ministry among people in the Hill.
- Pray some with resources, talents, and gifts and abilities will join us as a part of CPC in The Hill and share these resources, talents, and gifts and abilities.
- Pray a few (someone, a married couple) would feel the call to help me figure out how to build a ministry of hospitality in and through CPC in The Hill.
- Pray God will provide us with our own, more permanent space for worship and ministry. Although we can stay at our present site on Davenport, it will not last forever; plus we need space that is ours to develop and use for ministry in the Hill.

January Monthly Update on our Financial Resources—We are grateful to be at 56% (or \$24,326, pledged our given) of our FY19 fundraising goal of \$43,440. This leaves \$19,200 (or 44%) remaining to raise for the necessary resources we need for our Hill church plant and ministry. Breaking this down on a monthly level, between pledges and one-time (or quarterly or monthly) gifts we need \$3,620 of monthly outside support. At 56%, this means we are at \$2,020 for monthly outside income; we need \$1,600 additionally each month to maintain the ministry. **This is where you can help fill the gap.** Please consider partnering with us financially—this can be pledged or given (monthly, quarterly, or even with an annual one-time gift). The chart below portrays how monthly giving (or an annual gift) works at various giving levels. *See where you can help. And, please help us for FY 19!*

Monthly	Annual	Supporters	Totals	
\$30	\$360	5	\$150	\$1,800
\$50	\$600	3	\$150	\$1,800
\$100	\$1,200	2	\$200	\$2,400
\$150	\$1,800	2	\$300	\$3,600
\$300	\$3,600	1	\$300	\$3,600
\$500	\$6,000	1	\$500	\$6,000
Additionally needed >>			Monthly \$1,600	FY 19 \$19,200

Thank you and keep the support and pledges coming!



New Home—I can't do this without my wife. On our first day in our new Hill apartment, she single-handedly cut and hung blinds for us. She is so new at this pastor-wife stuff, but she is a great help-mate, and I am very grateful for her. New Home. New neighbors. And, a home that will be a space for ministry.

OUR HILL MINISTRY PRAYER REQUESTS

- Pray that God helps us to be good neighbors on our new street (Carlisle St) here in the Hill and that God gives us divine appointments.
- Pray God gives us wisdom to use our new home as an extension of our CPC in The Hill vision (timing for home Bible study, communal meals, sidewalk BBQs, etc.).
- Pray God continues to move people whom I have been befriending and working with over the past two years *into our fellowship*, many who would call me their pastor—pray God opens their hearts to the importance of church.
- Pray that God will connect us to new potential supporters who will partner with us financially so that we will have all the resources needed for our Hill ministry

Ways to donate—monthly payments or as one annual sum

- By check to “CPC New Haven”; memo “Hill/CA”; send: CPC New Haven, 135 Whitney Ave, New Haven, CT 06510
- Online at <http://www.cpcinthehill.org/> > Donate > Donation Applied > “Hill Church Planter–Rev. Chip Anderson”



My honor to be with Building IT Together as we serve a hot breakfast to our Hill neighbors each Saturday at 12:30pm. We bring the hot chocolate.



CPC in The Hill lost a special friend to the shores of heaven this month. Rodley (in cap and dark T-shirt), what a kind soul, a gracious Christian man, was one of the Beacon Bikers who'd help at our summer BBQs. Often you would see him walking with Charlie Z, sharing Christ, praying with those in the park. He was a good example of a good Christian. He will be missed. Yet, now he knows the fullness of joy and awaits us to join him in the presence of his Savior.



Lisa and I out at One6Three Pizza. The owner will be an advisor for business start-ups in the Hill. I am so grateful for Andrew's friendship.